

# MITA - ANTI SKID DEVICE FOR TYRES

## ATTENTION!



**MITA IS ONLY SUITABLE FOR TYRES WITH A CONTINUOUS GROOVE MEASURING A MINIMUM OF 6mm IN WIDTH AND 4mm IN DEPTH AROUND THEIR CIRCUMFERENCE.**

**THE FOLLOWING ADVICE AND INSTRUCTIONS MUST BE READ PRIOR TO USE TO ENSURE THE CORRECT AND SAFE PREPARATION, INSTALLATION, ADJUSTMENT, USE, REMOVAL AND MAINTENANCE OF THE PRODUCT.**

## GENERAL ADVICE

**Referring to the *Contents Index*, ensure all the component parts of the product are present and have not been visibly damaged during transportation. If you have any doubts do not use the product and contact a technical assistance centre authorised by BLUMEC.**

**MITA must only be used for the purpose it was designed for i.e. as a traction aid to provide improved grip on snow or ice covered road surfaces and un-surfaced roads. Any other use is considered inappropriate and potentially dangerous. BLUMEC will not be held responsible for any damage or other negative eventualities that arise from erroneous or improper use. If the product was purchased abroad please insure it's use complies with local laws.**

**Before starting the preparation of the chain, familiarise yourself with all parts and characteristics of this modular system. If you are in any doubt please contact a technical assistance centre authorised by BLUMEC for further guidance.**



## FITTING, ADJUSTMENT, REMOVAL & MAINTENANCE

1. Make sure that the continuous groove in the tyre tread is free from stones and other debris that could impede the correct fitting of MITA. You can use the screwdriver provided (F) to help dislodge any debris present.
2. Place the assembled chain on the tyre, with arrow shaped plates pointing in the direction of travel and position it so that the connectors sit in the continuous groove of the tyre (Fig. 2).

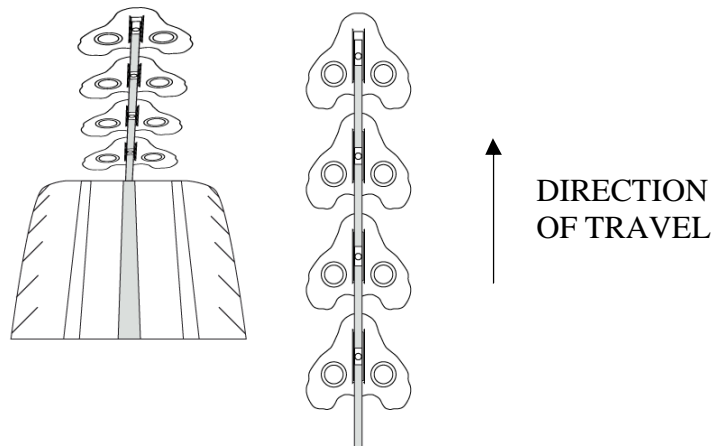


Fig. 2

3. Using the ties (H) provided, fasten the first plate and the last plate in contact with the tyre in place leaving the rest of the chain free (Fig. 3).

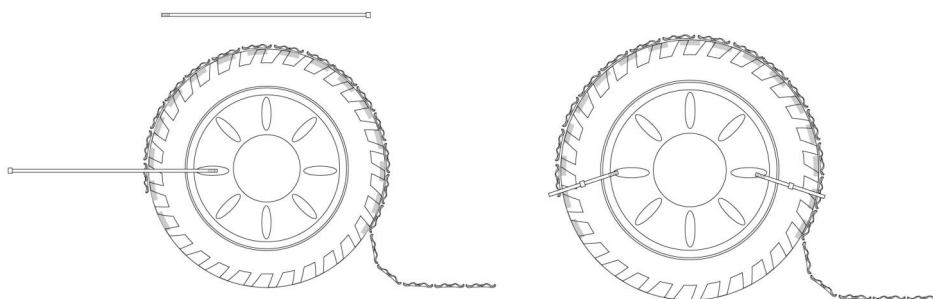


Fig. 3

4. Rotate the wheel 180° forward so the free end of the chain can meet with the fastened end (Fig. 4).

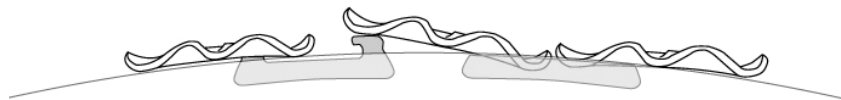


Fig. 4

When fitting MITA for the first time you may find it helpful as you move the vehicle forward to have another person to watch and advise you when the wheel has rotated sufficiently.

5. To securely close the chain the Tension Clamp (D) is attached to the open ends of the chain (Fig. 5) ensuring the special hook feature is first positioned correctly over the leading edge of the plate followed by the two rear hooks into the holes of the plate to be connected. The Tension Clamp (4) can be adjusted in length by turning its end screw (Fig. 5).

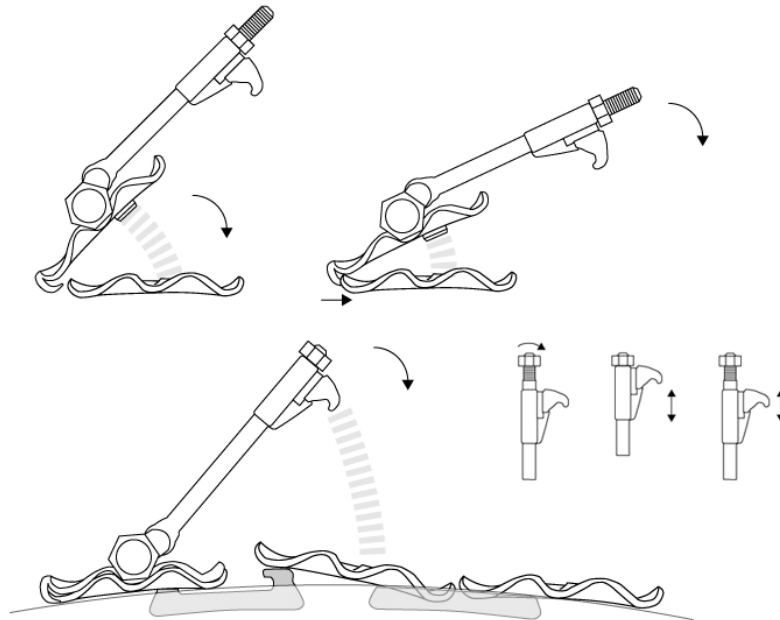


Fig. 5

Attach the supplied Clamp Lever (E) to the Tension Clamp (D) (Fig. 6).

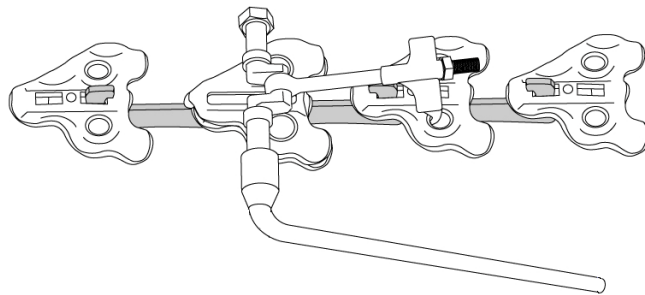


Fig. 6

Rotate the Clamp Lever (E) 180° to draw the two ends of the chain together and connect the plate with the connector (Fig. 7-8).

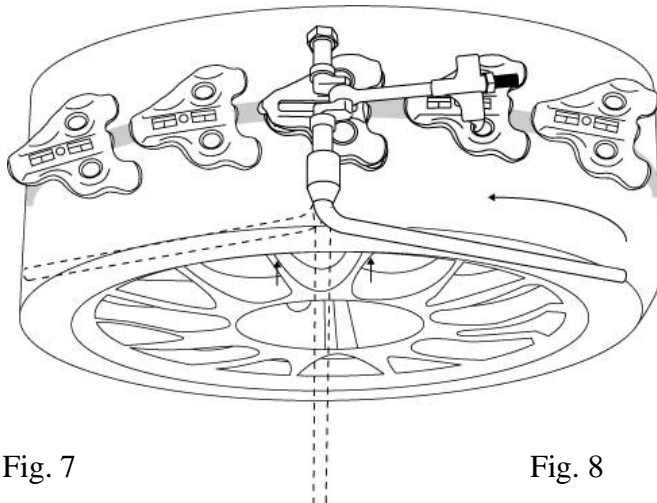


Fig. 7

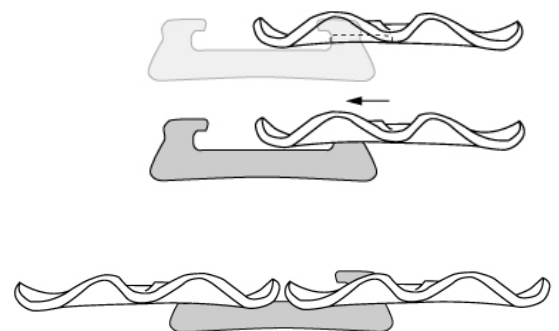


Fig. 8

**CAUTION: MAKE SURE THE CONNECTOR IS INSERTED COMPLETELY & CORRECTLY INTO THE PLATE (Fig. 8).**

6. Now that the chain is connected correctly, remove the Tension Clamp (D) and check the chain is attached securely to the tyre. Using both your hands try to move the chain. The chain should be very tight on the tyre and there should be no movement. If there is movement you will need to shorten the length of the chain by replacing one or more long connectors (B) with the same number of short connectors (C) to reduce the length of the chain in increments of 5mm until the correct length is achieved. If the problem persists review steps 1 to 5.

**CAUTION: IT IS ADVISABLE TO CHECK THE TIGHTNESS OF THE CHAIN AFTER A FEW KILOMETRES ESPECIALLY IF IT HAS BEEN USED ON SNOW AND ICE FREE SURFACES AND TIGHTEN, IF NECESSARY, FOLLOWING THE INSTRUCTION IN POINT 6.**

**CAUTION: INCORRECT ASSEMBLY AND FITTING OF THE CHAIN COULD RESULT IN THE CHAIN OPENING WHILE IN USE.**

7. Removal of the MITA is simple. The modular design allows the chain to be broken at any point. Correctly attach the Tension Clamp (D) as described above (Fig. 5) at any position on the chain. Attach the Clamp Lever (E) to the Tension Clamp (D) (Fig. 6). Rotate the Clamp Lever (E) 180° to draw two plates closer together (Fig. 7-8). The plate should disconnect easily from the connector, if not gently lift the plate using the Screwdriver (F) (Fig. 9).

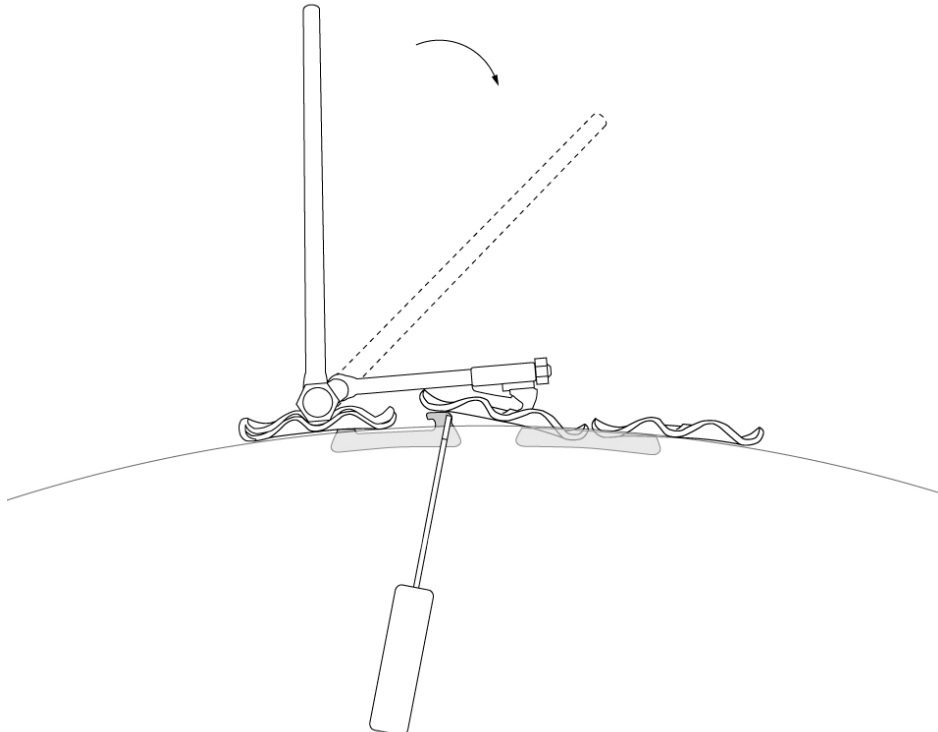


Fig. 9

Remove the Tension Clamp (D) and place the free ends of the chain on the ground. The vehicle can now be moved forward slowly to release the chain. For convenience of use, both chains can be rolled up and stored in their container without the need to disassemble them.

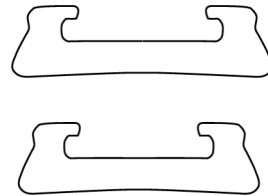
**It is advisable to rinse the chains with fresh water after each use and allow to dry.**

# CONTENTS INDEX

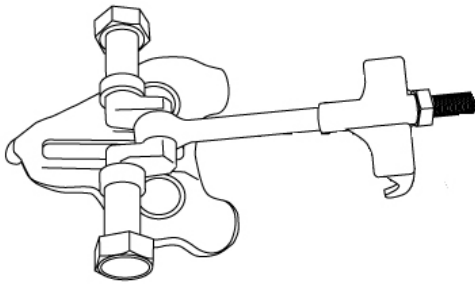
**A.** 66 SHAPED PLATE



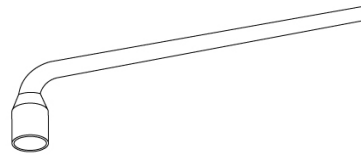
**B.** 66 LONG CONNECTORS  
**C.** 30 SHORT CONNECTORS



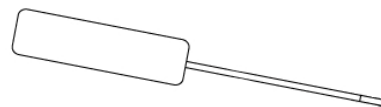
**D.** 1 TENSION CLAMP



**E.** 1 CLAMP LEVER



**F.** 1 SCREWDRIVER



**G.** 1 PAIR OF GLOVES



**H.** 4 RELEASABLE TIES

